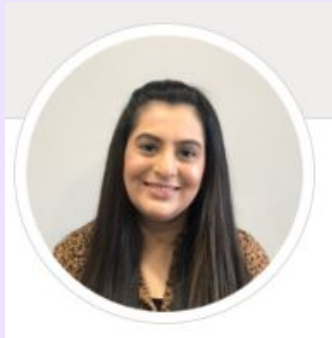


What's On Nursery/Reception



Nursery/Reception



Mrs Hanif
EYFS Lead



Mrs Druce
Nursery



R Elephants
Mrs Hassan



R Ducklings
Miss Speak



R Cats
Miss Seek

Medium Term Plan Nursery– Autumn 2

Crossley Hall Primary School
Medium term Plan – Autumn 2 - Nursery Ants

| | Week 1 | Week 2 | Week 3 | Week 4 | Week 5 | Week 6 | Week 7 |
|----------------------------|---|--|--|---|--|---|---------------------|
| English | Where's Spot? | | | | | | |
| | Joining in repeated refrains/ Positional language | | | | | | |
| Maths | Shape & Space Combine objects like stacking blocks and cups, put objects inside others and take them out again. | Shape & Space Combine objects like stacking blocks and cups, put objects inside others and take them out again. | Shape & Space Completes inset puzzles | Shape & Space Categories objects by Colour (2 colours) | Shape & Space Categories objects by Colour (3 colours) | Shape & Space Categories objects by size | Revisit any gaps in |
| Understanding the World | Explore different properties | | | | | | |
| | Explore natural materials indoors and outdoors. | | Explore Materials with different properties | | Explore and respond to nature | | |
| Expressive Arts | Explore paint, using fingers and other parts of their bodies as well as brushes and other tools | | Explore voices and enjoy making sounds | | Explore different materials, use them, manipulate and play | | |
| PSED | Engage with others through gestures, gaze and talk | | Play with increasing confidence on their own and with other children | | Feel confident when taken out and enjoy exploring new | | |
| Communication and Language | <p>Story Time: Discussing stories. Daily Rhymes: Rhyme of the week. Poetry.</p> <p>Developing listening skills: Waiting for and taking turns to talk.</p> <p>Listen and respond to simple instructions.</p> <p>Understand single words in context.</p> | | | | | | |
| PE | <p>Gaining control of their whole body through continual practice of large movements- Fit themselves into spaces, like tunnels, dens, large boxes and move around in them</p> <p>Clap and stamp to music</p> <p>Explore different materials and tools</p> | | | | | | |

Crossley Hall Primary School
Medium term Plan – Autumn 2 – Nursery Bears

| | Week 1 | Week 2 | Week 3 | Week 4 | Week 5 | Week 6 | Week 7 |
|----------------------------|--|---|---|--|---|---|--|
| English | Little Red Riding Hood | | | | | | |
| | Warning Story | | | | Instruction: Instructions | | |
| Maths | Shape & Space Select shapes appropriately for tasks -Learning common 2D shapes | Shape & Space Select shapes appropriately for tasks -Learning common 2D shapes | Shape & Space Select shapes appropriately for tasks - | Shape & Space Select shapes appropriately for tasks - | Shape & Space Use shapes appropriately for tasks | Shape & Space Use shapes appropriately for tasks | Revisit any gaps in children's knowledge from past weeks |
| Understanding the World | Woodlands and Habitats | | | | | | |
| | The seasons - develop an understanding of change | | Use all their senses in hands-on exploration of natural materials. | | Talk about what they see, using a wide vocabulary. | | |
| Expressive Arts | Understands they can use lines to enclose space, and then use these shapes to represent. | | Use various materials and begin to construct, stacking vertically and horizontally making enclosures and creating spaces. | | Take part in simple pretend play, using an object to represent something else even though they are not similar. | | |
| PSED | Become more outgoing with unfamiliar people, in the safe context of their setting. | | Show more confidence in new social situations. | | Recap emotions, happy, sad, angry | | |
| Communication and Language | <p>Story Time: Discussing stories. Daily Rhymes: Rhyme of the week. Poetry.</p> <p>Developing listening skills: Waiting for and taking turns to talk.</p> <p>Learning and using new vocabulary. Asking questions. Extending sentences using connectives.</p> | | | | | | |
| PE | <p>Movement-Continue to develop their movement, balancing, riding (scooters, trikes and bikes) and ball skills.</p> <p>Use large muscles movements to paint and mark make</p> | | | | | | |

Medium Term Plan Reception– Autumn 2

| | Week 1 | Week 2 | Week 3 | Week 4 | Week 5 | Week 6 | Week 7 |
|-------------------------------------|---|--|--|---|---|--|--|
| Religious and cultural celebrations | Bonfire Night (5/11) | Remembrance Day (11/11) | | | | | Hanukkah (18-26/12) Christmas (25/12) |
| | In the deep dark woods | | | | | | |
| Focus Story | Owl Babies | Owl Babies | The Gruffalo | The Gruffalo | The Gruffalo | The Christmas Story | The Christmas Story |
| English | Read Write Inc | | | | | | |
| Maths | Representing 1,2 and 3 Sorting 1,2 and 3 | Matching and comparing amounts 1,2 and 3 | Sorting shapes and shape pictures-circles Positional language | Representing and sorting 4 and 5 Matching 4 and 5 | One more and 1 less to 5 | Sorting shapes and shape pictures-squares and rectangles | Time Sequencing Day and night |
| Topic | Changing Seasons Bonfire and Firework safety | Remembrance Day What mammals/animals live in woodlands? What is similar/different about them? | <u>Artist Focus:</u> Wassily Kandinsky (Concentric Circles) | What is hibernation? When do woodland animals sleep? (Nocturnal) | Christmas Story What is a habitat? What are the habitats of animals in the woods? | Christmas Productions | Do we all celebrate the same things? Why? Discuss celebrations. Christmas/ <u>Hannukah</u> |
| PSED | Form positive relationships with adults and children in the class. Start to become more confident trying new things. Gain confidence speaking to everyone in the class and form friendships. Understand and follow the rules and routines of the classroom | | | | | | |

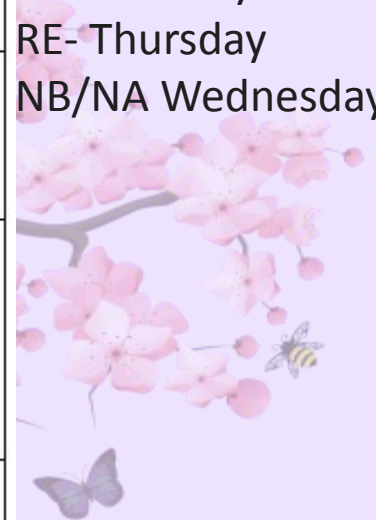
PE Days

RC- Monday

RD- Tuesday

RE- Thursday

NB/NA Wednesday



Timetable example

| RE | 8.30-45 | 8.45-8.55 | 9.00-9.30 | 9.30-10.15 | 10.15-10.30 | 10.30-11.30 | 11.30-12.00 | 12.10-1.00 | 1.00-1.20 | 1.20-2.30 | 2.30-3.00 |
|-----------|--|---------------------------|-----------|---------------|-------------------------------------|---------------|-------------|------------|-------------------|-----------------|------------|
| Monday | Self -registration Gross Motor Dancing songs | Squiggle while you wiggle | Phonics | Choosing Time | Story and Snack Mastering Number | Choosing Time | Maths | Lunch | Topic/ English | Choosing Time | Story Time |
| Tuesday | Self -registration Gross Motor Dancing songs | Squiggle while you wiggle | Phonics | Choosing Time | Story and Snack Mastering Number | Choosing Time | Maths | Lunch | Topic/ English | Choosing Time | Story Time |
| Wednesday | Self -registration Gross Motor Dancing songs | Squiggle while you wiggle | Phonics | Choosing Time | Story and Snack Mastering Number | Choosing Time | Maths | Lunch | Topic/ English | Choosing Time | Story Time |
| Thursday | Self -registration Gross Motor Dancing songs | Squiggle while you wiggle | Phonics | Choosing Time | Story and Snack Mastering Number | Choosing Time | Maths | Lunch | Topic/ English | P.E (2.00-2.50) | |
| Friday | Self -registration Gross Motor Dancing songs | Squiggle while you wiggle | Phonics | Choosing Time | Story and Snack Mastering Number | Choosing Time | Maths | Lunch | Topic/ English | Choosing Time | Story Time |

PE Days

RC- Monday RD- Tuesday RE- Thursday Nursery - Wednesday

Crossley Hall Primary School



We would like to invite parents to another open session so you can do activities alongside your child and staff.

Monday 18th December – Nursery

Tuesday 19th December - Reception



Polite Reminders

Uniform/PE
(Named)

Punctuality

Dummies –
3YO

Daily Readers

Birthday
Treats

No prams
please-
Reception

Weather

Potty Training-
3YO

Key Dates

Parents Evening (book online)

15th November 3.30-5.30pm

22nd November 3.30-5.30pm

Reception Nativity Performance

Thursday 14th December at 2.00pm (Main Hall)

Stay and Play sessions

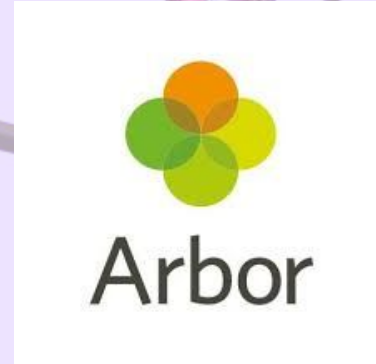
Monday 18th December – Nursery (10:30 and 2:15)

Tuesday 19th December – Reception (8:50 – 9:15)



| Event | When | Time |
|---|---|---------------------------------------|
| Reception- What's On Meeting for parents/carers | Monday 30th October | 2:30pm - 2:55pm |
| Year 1, 2 and 3- What's On Meeting for parents/carers | Tuesday 31st October | 2:30pm - 2:55pm |
| Year 4, 5 and 6- What's On Meeting for parents/carers | Wednesday 1st November | 2:30pm - 2:55pm |
| Children's book week | Book and bagel morning (KS2) (8th November) Bedtime story (KS1) (9th November) | 8:45am - 9:30am 2:00pm - 3:00pm |
| Celebrating Diwali | Year 1 and 2: 14th November Year 3 and 4: 15th November Year 5 and 6: 16th November | 1:45pm- 2:45pm |
| Parents evening | 15th November 22nd November | 3.30pm - 5.30pm 3.30pm - 5.30pm |
| Phonics Drop in sessions and workshop (EYFS and KS1) | Reception: 20th November Year 1: 21st November Year 2: 22nd November | 8.50am - 9.30am |
| Parent's Coffee morning | 8th December | 9:00am - 10:00am |
| Christmas Craft Afternoon | 11th December: RP 12th December- Y1 and Y2 13th December- Y3 and Y4 14th December- Y5 and Y6 | 2.00pm - 2:50 pm |
| Christmas Dinner Day | 12th December | |
| Reception Nativity Performance | Thursday 14th December | 2:00pm - 2:55pm |
| SEND Parent/ Carers Drop In Session | 1st December | 1:30pm- 3:00pm |
| Stay and Play (Festival of Learning) | Nursery: Monday 18th December Reception: Tuesday 19th December Year One: Tuesday 19th December | 10:30am and 2:15pm 8:50am - 9:15am |

Arbor Parent Portal



Meet the Trust



You are invited into school on **Wednesday 1st November at 2:30pm** to meet some key members of staff from the Central Trust Team. They will be able to share with you the structure of the Trusts central services and how the work of the central team supports Crossley Hall.

They will also explain how you can raise issues about your child/ren's welfare and education, and then work with the Central Team to address any concerns.

Further to this, we would like to offer our support to any parents or carers that may be struggling to access the Arbor App or ParentPay. We are a paperless and cashless school so it is essential that you have access to both of these services. Mrs Holroyd (our Family Liaison Officer) will be on hand from 2pm if you require any assistance.



Crossley Hall
Primary School

Reception Open Day

Wednesday 6th
December 2023
3:30 – 4:30pm

*Tell a
friend*

Please email office@chps.paymat.org to confirm your
attendance

CROSSLEY HALL PRIMARY SCHOOL

Reception Admission Open Day

Want to apply for our school but
want to have a look?

JOIN US!

- Tour of the classrooms
- Meet the teachers
- School Dinner Sample Tasting
and many more

6th Dec 2023 | 3:30pm - 4:30pm
Crossley Hall Primary School, Thornton Road,
BD8 0HJ



www.crossleyhallprimary.co.uk





Attendance in Early Years

Here at Crossley, we want the best for our children. Having a good education is important to ensure that children have the best opportunities in their adult life. Children only get one chance at school and your child's future may be affected by not attending school regularly.

Children learn and develop more from birth to five years than at any other time in their lives and any gaps in their learning by the end of the Early Years will, on average, double by the end of their primary years.

Good Habits

There are many benefits to good attendance. It builds in children the idea that getting up and going to school is simply what you do - something they will take into their adult life when it comes to work. Children who attend regularly gain a sense of security from the regular routine. Unfortunately, underachievement is linked to lower attendance. Establishing good habits early is the key to future success.

Secure Relationships

Early Years teaches children how to interact with a range of peers and develop personal and social relationships. Young children find it easier to build and sustain a range of social relationships when they regularly attend Nursery and school. Poor attendance can affect children's ability to make and keep friendships; a vital part of growing up.

Attendance Matters

EYFS

Every day lost = approx. 6 hours of learning

Every week lost = approx. 27 hours of learning

11 days lost = 94% attendance and 66 hours of learning lost

19 days lost = 90% attendance, classed as Persistent Absentee and 114 hours of learning lost

5 minutes late everyday = 3 days of learning lost each year

15 minutes late everyday = means 2 weeks of learning lost each year



Learning and Development

Children's learning develops quickly in the Early Years. For example, once Phonics is being taught regularly in Reception, you will suddenly find children are reading and writing independently! Learning moves at a quick pace and any time lost creates gaps in their learning and the more gaps there are, the harder it is for children to catch up with their peers. Good attendance ensures that children can develop at the right pace, gain confidence as they make progress and ultimately enjoy school as they see themselves succeed.

Self Esteem

Children who rarely miss sessions at Nursery/school and arrive on time are more likely to feel good about themselves and be confident when arriving at school. Children who arrive late or regularly miss sessions, can feel a sense of uneasiness or feel they need to try a bit harder to understand what is going on or what other children are talking about or doing.

Punctuality

Coming to school on time is vital. Arriving late at school can be very disruptive for your child, their teacher, the other children in their class and their education. Arriving late everyday means your child will miss all their phonics lessons which will ultimately impact their reading and writing. It is important that children understand the importance of time keeping as a life skill too.

Useful Contacts

If we work together, we can make sure that your child grows and blossoms!

Family Liaison Officer: [Emily Jarrold](#)

Assistant Head Teacher/ EYFS Lead: [Mrs Hanif](#)

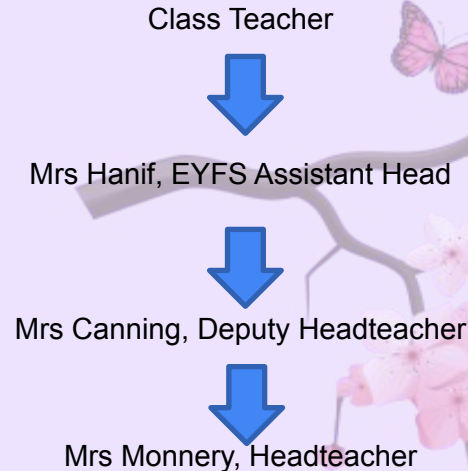
Head Teacher: [Mrs Mowery](#)



Parent/School Communication

- We would just like to thank parents and carers for their understanding with all the changes across school. We endeavour to make transitions as smooth as possible for children and your support in this is invaluable
- We appreciate that you are trusting us with your child, we want parents and carers to feel welcome and know who they can speak to if they have any questions or concerns.

Parent Information- who to go to if you need help





Any questions?